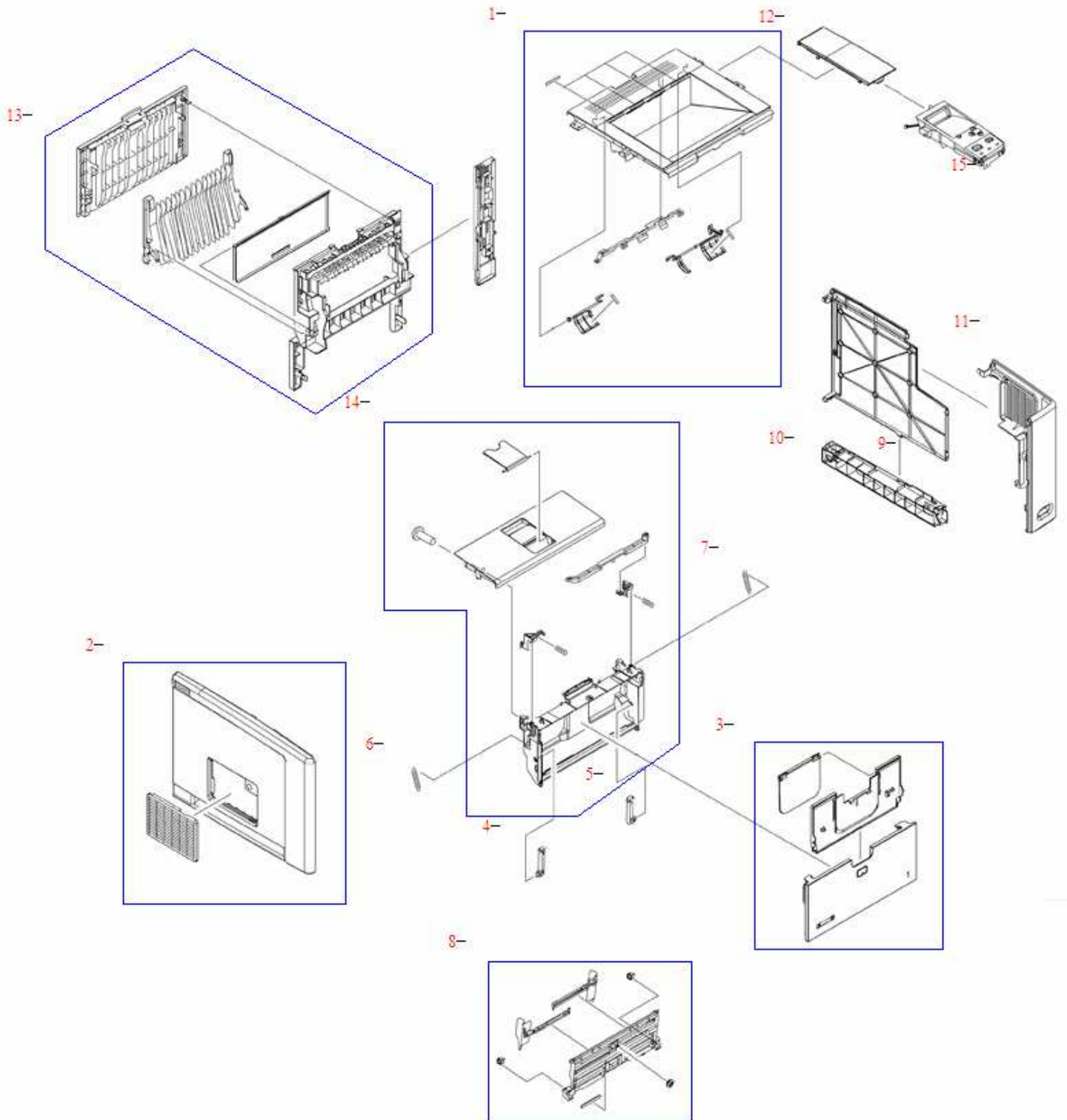


Covers



REF	PartNumber	Description
1	RM1-3720-020CN	Top cover assembly - Mounts on the top of the printer holds the paper when it is printed
	RM1-3720-000CN	Top cover assembly - Mounts on the top of the printer holds the paper when it is printed
2	RM1-3721-000CN	Left cover assembly
3	RM1-3723-000CN	Multi-purpose input tray cover assembly - Includes pull-out and flip-out tray extensions
4	RC1-4057-000CN	Tray hinge - Left side hinge for drop down tray 1 assembly
5	RC1-4058-000CN	Tray hinge - Right side hinge for drop down tray 1 assembly
6	RU5-2388-000CN	Tension spring - Provides tension for white plastic arm on left side of cartridge access door
7	RU5-2388-000CN	Tension spring - Provides tension for white plastic arm on left side of cartridge access door
8	RM1-1490-000CN	MP/Tray 1 support assembly - Hinged support and adjustable paper width guide assembly - Tray 1 cover assembly attaches to this assembly
9	RC2-0602-000CN	Right side cover - Located on the right side of the printer - Provides access to DIMMs
10	RC2-0603-000CN	Right lower cover - Horizontal plastic cover - Mounts on the right lower side of the printer
11	RL1-1367-000CN	Right front cover - Vertical plastic cover - Mounts on the right front of the printer
12	RC2-0605-000CN	Right upper cover - Used to cover the top side of the formatter board
13	RM1-3724-000CN	Rear cover assembly - Includes rear door assembly
14	RM1-3722-000CN	Cartridge access door assembly - Provides access to the cartridges
15	RM1-3725-000CN	Control panel assembly - Includes the display mounted on the right top side of the printer