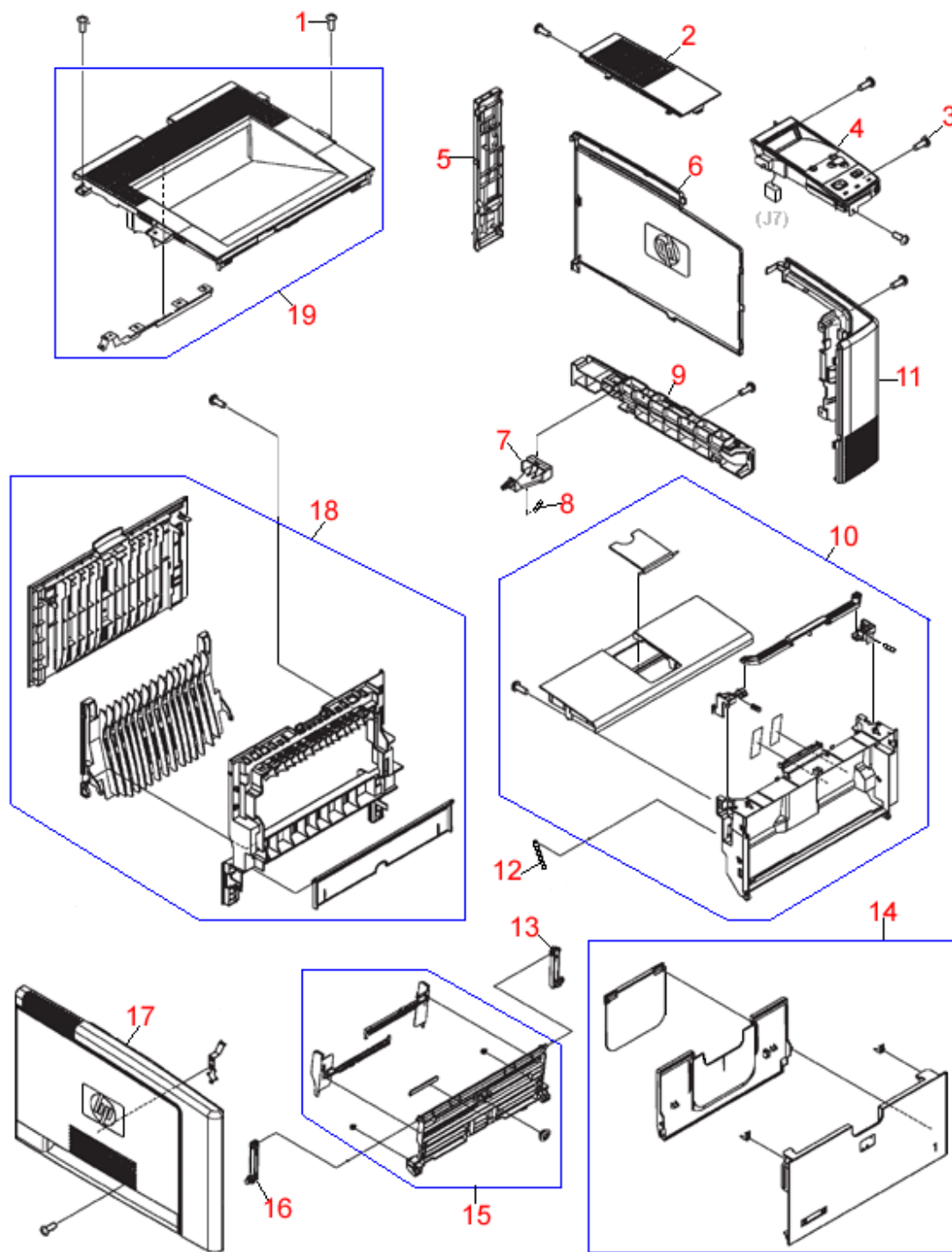


## HP LaserJet 2420 External Covers and Parts Diagram



<b>REF</b>	<b>PART #</b>	<b>DESCRIPTION</b>
<b>1</b>	XA9-1503	M3 truss head (Flanged) Phillips screw (Black oxide finish) - 6mm long
<b>2</b>	RC1-4159	Right top cover - Right side top case piece behind control panel
<b>3</b>	XB4-7401	Self tapping pan head M4 X 10 screw
<b>4</b>	RM1-1519	Control panel assembly - Control panel mounted on top right corner of printer
<b>5</b>	RC1-4156	Right rear cover - Vertical cover at right rear of printer - Covers power input and I/O connectors
<b>6</b>	RC1-4150	Right side cover - Removable right side cover for access to DIMM memory
<b>7</b>	RC1-4173	Power switch - Located at lower right rear side of printer
<b>8</b>	RU5-2406	Spring - Provides tension for power switch
<b>9</b>	RC1-4157	Right lower cover - Small cover under slide out DIMM access cover
<b>10</b>	RM1-1503	Door assembly - Cartridge access door assembly behind drop down Tray 1 assembly
<b>11</b>	RC1-4151	Right front cover - Right front corner of printer cover
<b>12</b>	RU5-2388	Tension spring - Provides tension for white plastic arm on left side of cartridge access door
<b>13</b>	RC1-4058	Tray hinge - Right side hinge for drop down Tray 1 assembly
<b>14</b>	RM1-1523	Multi-Purpose/Tray 1 cover assembly - Includes drop down, pull out and flip out trays
<b>15</b>	RM1-1490	Multi-Purpose/Tray 1 support assembly - Hinged support and adjustable paper width guide assembly - Tray 1 cover assembly attaches to this assembly
<b>16</b>	RC1-4057	Tray hinge - Left side hinge for drop down Tray 1 assembly

<b>17</b>	RC1-4148	Left cover - Left side of printer plastic cover
<b>18</b>	RM1-1517	Rear cover assembly - Drop down face up paper output tray assembly
<b>19</b>	RM1-1514	Top cover assembly - Top of printer cover and face down paper output tray assembly