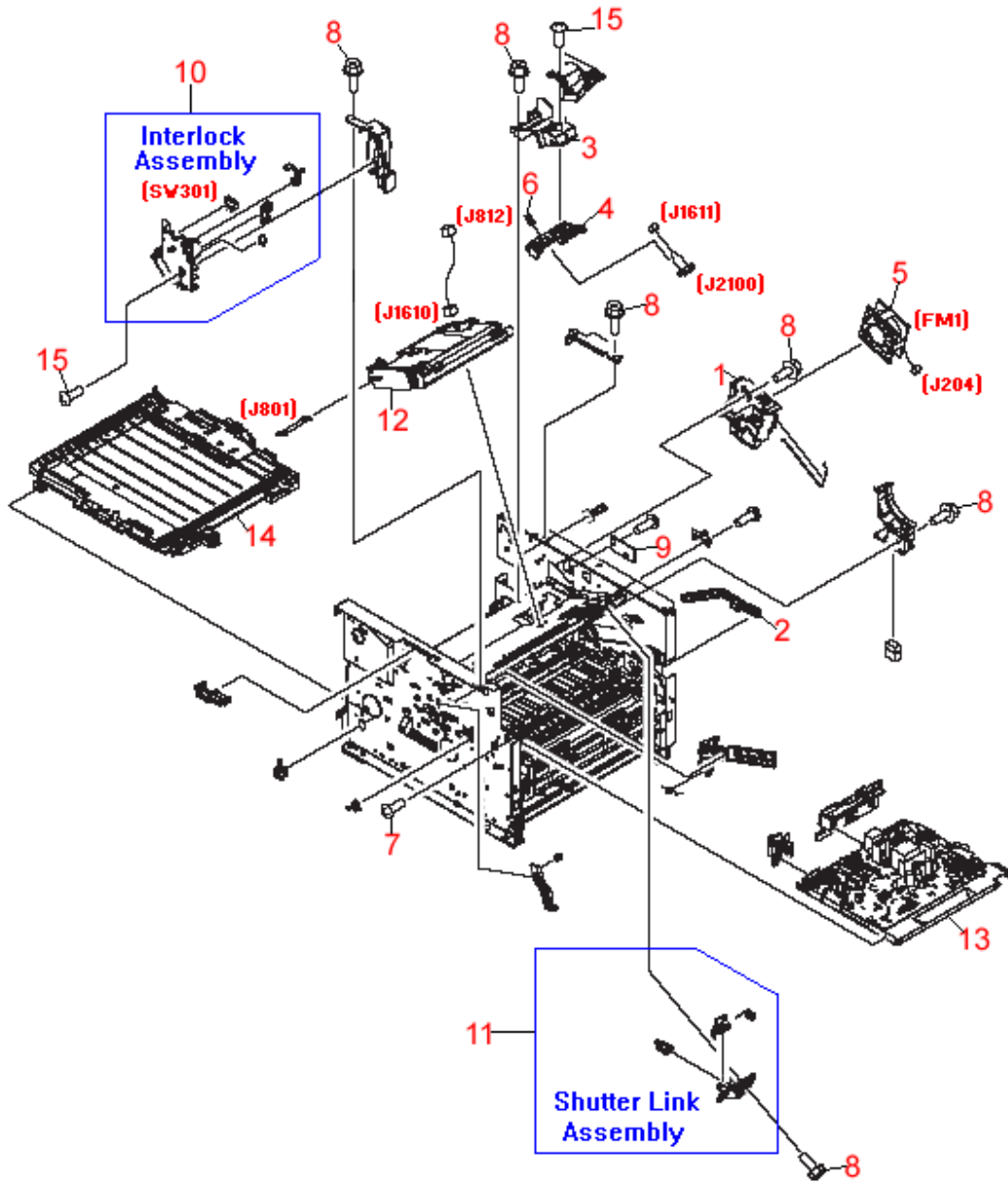


## HP LaserJet 1320 Internal Components (2 of 4) Diagram



REF	PART #	DESCRIPTION
-----	--------	-------------

<b>1</b>	RC1-3537	Fan Holder assembly - Plastic fan bezel with airflow ports - Directs airflow to the various parts of the printer - Mounts on the right side plate assembly
<b>2</b>	RC1-3544	Cam arm - Dogleg shaped arm - Disengages the toner cartridge drive gear when the toner cartridge access door is opened - Mounts between the access door and the main drive gear assembly
<b>3</b>	RC1-3550	Memory tag arm holder - Supports the tag arm assembly (toner cartridge memory reader) - Mounts towards the right end of the laser/scanner support shelf
<b>4</b>	RC1-3551	Tag arm - Spring loaded arm that holds the memory contact and cable (contacts the memory in the toner cartridge) - Mounts in the tag arm holder (Towards the right end of the laser/scanner support shelf)
<b>5</b>	RK2-0428	Fan assembly - Includes the small cooling fan and cable - Mounts in the fan housing / air flow guide on the right side plate assembly
<b>6</b>	RU5-2335	Compression spring - Applies downward pressure on the memory tag arm to contact the toner cartridge
<b>7</b>	XA9-1503	M3 truss head (Flanged) Phillips screw (Black oxide finish) - 6mm long - Typically used to secure plastic parts to the metal side plates and the engine control board to the support pan
<b>8</b>	XA9-1504	M3 truss head (flanged) screw - 8mm long - Typically used to secure metal assemblies to the left and right side plates
<b>9</b>	RM1-1262	Duplexer control board - Small PC board that mounts just above and to the left of the fan on the right side plate assembly
<b>10</b>	RM1-1320	Interlock switch assembly (Has mounting clips for the wireless LAN PC board for the LaserJet 1320nw) - Disables the printer when the left side cover is removed - Mounts in the upper front corner of the left side plate assembly
<b>11</b>	RM1-1321	Shutter link assembly - Spring loaded link which engages the shutter on the laser/scanner assembly (blocking the laser beam) when the toner cartridge access door is opened - Mounts on the left front of the laser/scanner support shelf
<b>12</b>	RM1-1470	Laser/scanner assembly - Mounts on the laser/scanner support shelf
<b>13</b>	RM1-1242	Engine control unit (ECU) PC board - Control and power supply board for the printer (For 110V to 127V operation) - Does NOT includes the power cord connector or power switch - Mounts in the bottom of the printer
	RM1-1243	Engine control unit (ECU) PC board - Control and power supply board for the printer (For 220V to 240V operation) - Does NOT includes the power cord connector or power switch - Mounts in the bottom of the printer

	RM1-1300	Engine control unit (ECU) PC board assembly - Includes the PC board, bottom pan, and standoffs (For 110V to 127V operation) - Does NOT includes the power cord connector or power switch - Mounts in the bottom of the printer
	RM1-1462	Engine control unit (ECU) PC board assembly - Includes the PC board, bottom pan, and standoffs (For 220V to 240V operation) - Does NOT includes the power cord connector or power switch - Mounts in the bottom of the printer
<b>14</b>	RM1-1313	Duplexer assembly - Includes the paper guide plate, output guide rollers, and size change assembly - Slides in the opening on the lower rear of the printer
<b>15</b>	XB4-7300	M3 self-tapping pan head Phillips screw (Black oxide finish) - 8mm long - Used to secure the memory tag assembly to the laser/scanner support shelf