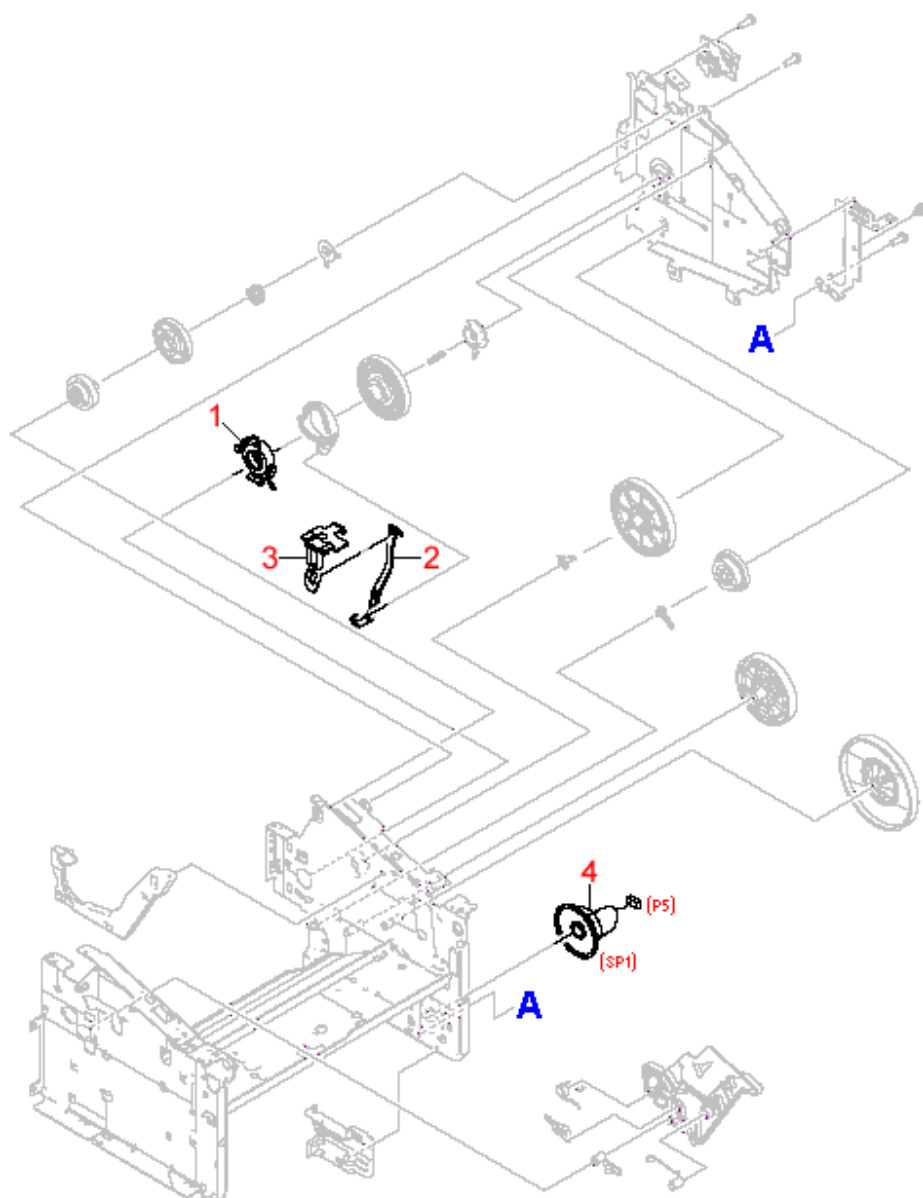


HP LaserJet 3030 All-In-One Printer Internal Components (3 of 3) Diagram



REF	PART #	DESCRIPTION
1	RC1-1953	Bushing - Twist locks into place - For the toner cartridge drive gear - Mounts in the center rear of the right side plate

2	RC1-2485	Lower coupler link - Connects between the toner cartridge drive gear disengaging cam and the top link coupler (bracket)
3	RC1-2494	Top coupler link - L-shaped plastic bracket - Pulls the the lower coupler link to disengage to toner cartridge drive gear - Snap locks into the bottom of the scanner frame assembly
4	RM1-0915	Speaker assembly - Includes the round speaker and cable assembly - Mounts to the lower front of the right side plate