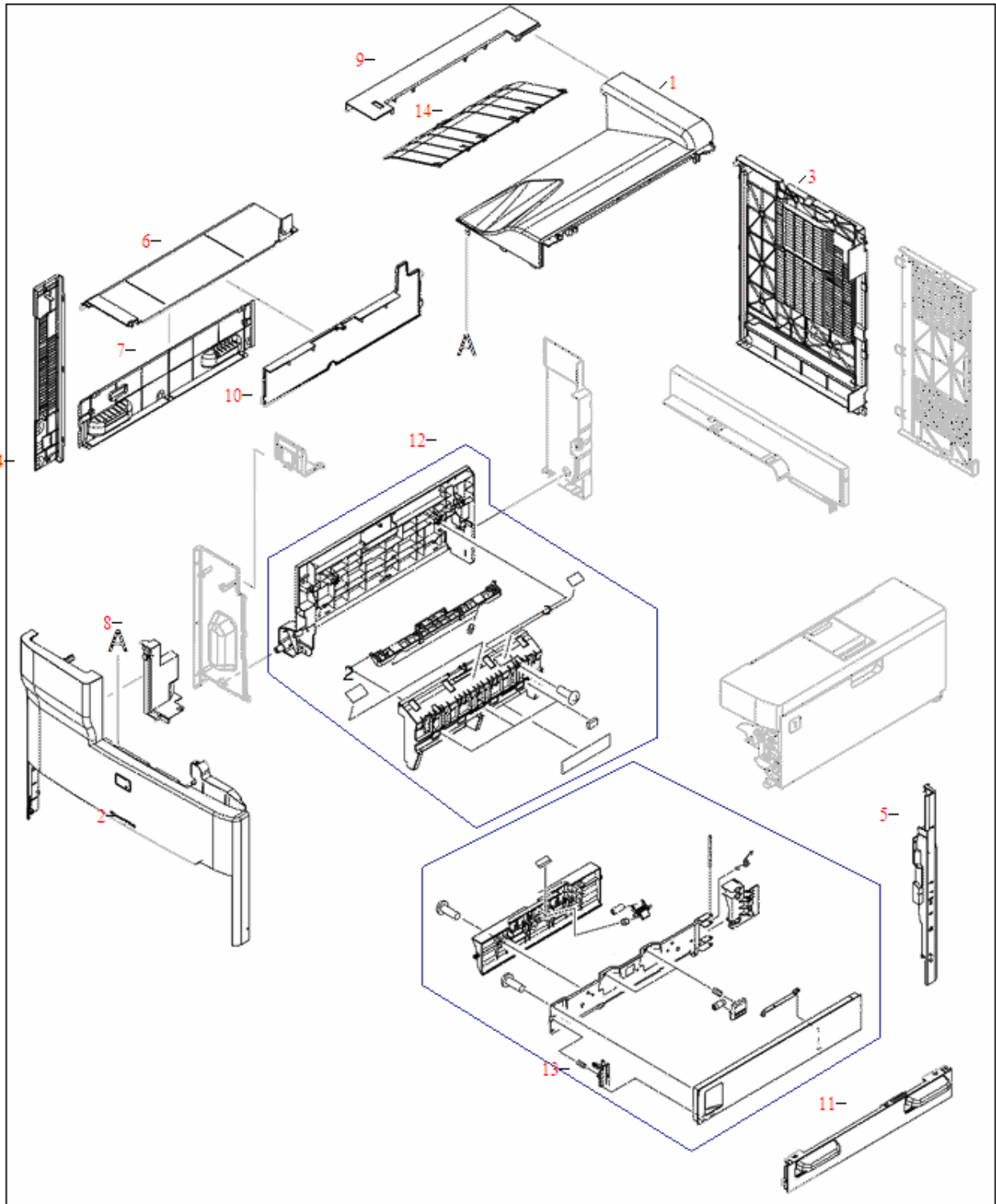


External panel and covers



REF	PartNumber	Description
1	RC1-8220-000CN	Front cover - Face down paper delivery cover
2	RC1-8221-010CN RC1-8221-000CN	Front Cover - Plastic cover on top of the paper cassette tray Front Cover - Plastic cover on top of the paper cassette tray
3	RC1-8223-000CN	Formatter board cover - Located on the back right side of the printer next to the rear cover
4	RC1-8235-000CN	Duplexer blank cover - Located next to the left upper cover
5	RC1-8226-000CN	Right rear cover - Plastic cover located on the right rear side of the printer next to the right door assembly
6	RC1-8227-000CN	Left upper cover - Small rectangular cover - Located on top of the left lower cover
7	RC1-8228-000CN	Left lower cover assembly
8	RC1-8231-000CN	Face down side cover - Located between the front cover and the inner front cover
9	RC1-8233-000CN	Top cover - Attached to the face down top cover
10	RC1-8235-000CN	Duplexer blank cover - Located next to the left upper cover
11	RC1-8236-000CN	Right grip cover - Rectangle shaped cover with two handles to pull the right door
12	RM1-2990-000CN	Left door assembly - Includes flapper pad, left door, facedown guide, left door handle, compression spring, and screw
13	RM1-2991-000CN	Right door assembly - For the print engine - Located below the cartridge access door
14	RC1-8137-000CN	Tray - Goes between the face down delivery cover and the top cover