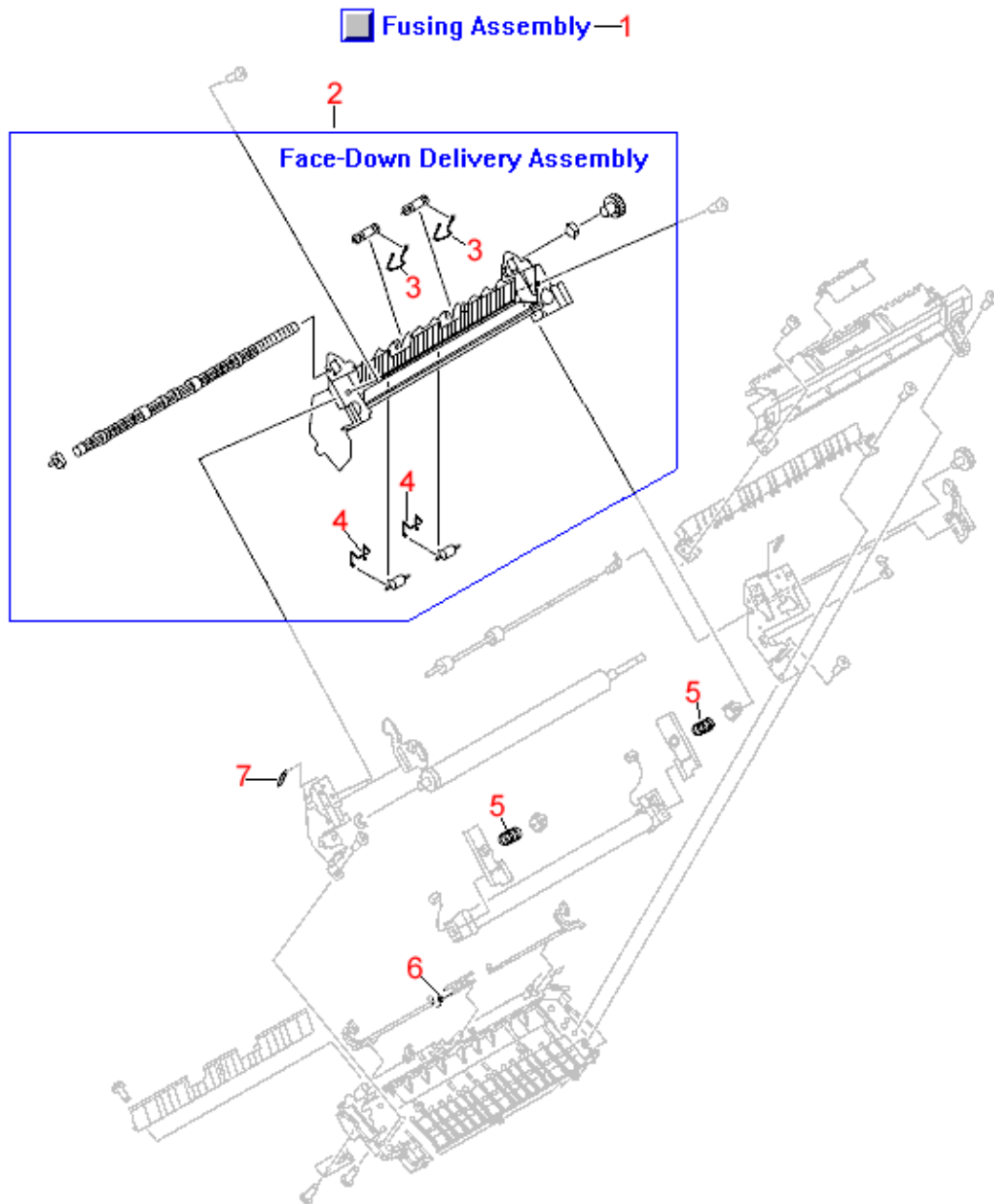


HP LaserJet 1300 Fusing Assembly Diagram



REF	PART #	DESCRIPTION
-----	--------	-------------

1	RM1-0715	Fusing assembly - Bonds toner to paper with heat (For 100V to 127V operation) - Mounts in the upper rear of the printer
	RM1-0716	Fusing assembly - Bonds toner to paper with heat (For 220V to 240V operation) - Mounts in the upper rear of the printer
2	RM1-0556	Face-down delivery assembly - Includes the support frame, drive roller and gear, and the four spring loaded pressure rollers - Mounts in the upper rear of the fusing assembly
3	RA0-1116	Torsion spring - Provides pressure for the upper serrated rollers on the face-down paper delivery assembly (two used)
4	RA0-1115	Torsion spring - Provides pressure for the lower solid rollers on the face-down paper delivery assembly (two used)
5	RU5-2140	Compression spring - Provides downward pressure on each end of the fusing roller (two used) - Mounts in the upper part of the fusing assembly
6	RA0-1099	Torsion spring - Provides a small amount of back pressure for the delivery sensor flag - Mounts in the rear center of the fusing assembly
7	RA0-1090	Tension spring - Provides upward tension for the green release lever (two used) - Mounts in the left and right rear corners of the fusing assembly