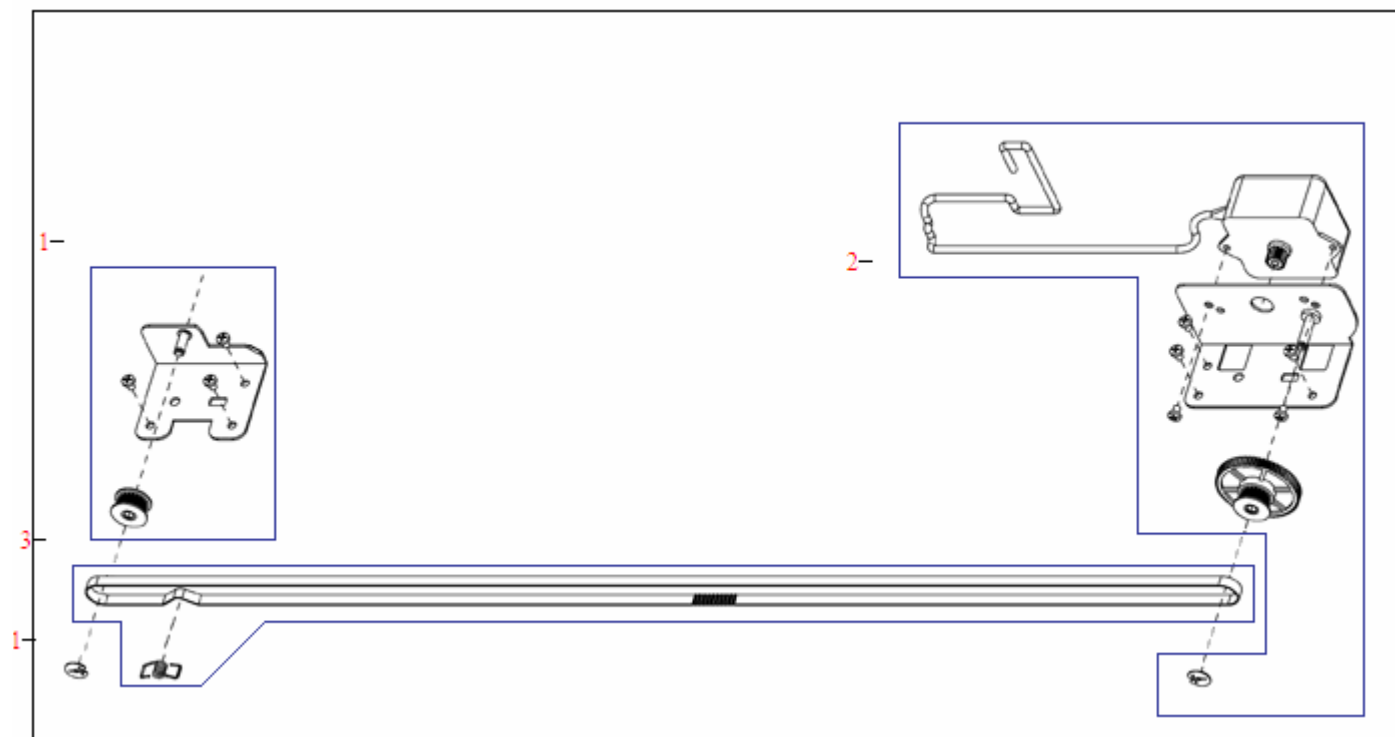


Scanner transmission drive assembly



| REF | PartNumber | Description |
|-----|-------------|--|
| 1 | Q7829-60151 | Pulley assembly - For transmission timing belt |
| 2 | Q7829-60149 | Transmission motor assembly - Located on the transmission drive assembly - Makes the gear move the timing belt |
| 3 | Q7829-60150 | Transmission timing belt - Maintain constant speed during power transmission |